



ENTRO
NILE BASIN INITIATIVE
 INITIATIVE DU BASSIN DU NIL



Regional Climate Resilience Program (RCRP) Project for East and Southern Africa



Inside This Issue

- Introduction2
- Scope3
- Progress3
- Project Beneficiaries and Benefits4
- Project Management4
- Special Internship5

- Participating Regional Organizations6



Introduction

The overall purpose of this project is to improve regional preparedness for the increasing frequency, intensity, and impact of water-related climate shocks on people, livelihoods, infrastructure, and ecosystems in select countries of Eastern and Southern Africa with the assistance of regional organizations, to respond promptly and effectively.

The Project is conceived as Series of Projects (SOPs), structured around several components, including:

Component 1, which focuses on disaster risk management, early warning systems, and climate financing;

Component 2 that responds to the urgent need for transformational and sustainable infrastructure investments that are critical for improving the management of climate change impacts on water resources;

Under the stated Program Development Objective (PDO of improving resilience to water-related climate impacts, in this first phase, the target countries are Comoros, Madagascar, Malawi, Mozambique, and South Sudan with the assistance of the African Union (AU), Southern Africa Development Community (SADC), and the Nile Basin Initiative (NBI), as appropriate. Future phase is envisioned to involve Ethiopia, Tanzania, Uganda, and Zambia.

Cont....

Component 3, for ensuring that the most vulnerable populations are better protected from climate risk through enhanced access to information and adaptive social protection programs;

Component 4 corresponds to project management;

Component 5 concerns Contingent Emergency Response as appropriate.





ENTRO & NELSAP-CU were awarded certificate of training generations, including under RCRP.

Scope

Through the Eastern Nile (EN) Technical Regional Office (ENTRO), the executive arm of the NBI EN [Subsidiary Action Program](#) (ENSAP), the World Bank under the International Development Association (IDA) is supporting both ENTRO and the Nile Equatorial Lakes (NEL) Subsidiary Action Program (NELSAP) Coordination Unit (NELSAP-CU) to implement various related activities at the regional/basin-wide level.

These activities include:

- 1) Development of Flood Risk Mapping for selected areas in the Baro-Akobo-Sobat (BAS) sub-basin involving Ethiopia and South Sudan;
- 2) Feasibility study for flood management interventions for the Yabus River and associated riverine involving Ethiopia, South Sudan and Sudan;
- 3) Integrated Transboundary flood management at the Elegu-Nimule border between South Sudan and Uganda;
- 4) Enhancing Community Awareness and Preparedness towards climate change adaptation and resilience; and
- 5) Strengthening ENTRO, NELSAP-CU and their member countries' capacities.



Progress

- Participation in the 2025 World Water Week (WWW2025)
- Post NCCR sustainability plan and AWPB for July 2025 to June 2026 fiscal year
- Special Internship:
- Social and Environmental (S&E) Risks Management:
- Development of Flood Risk Mapping for selected areas in the (BAS) sub-basin, involving Ethiopia and South Sudan
- Yabus floods management interventions feasibility study consultancy services, involving Ethiopia, South Sudan and Sudan.
- Coordination with NELSAP-CU on Unyama Transboundary Integrated Flood Risk Assessment & Management Plan Prefeasibility at Elegu-Nimule border between South Sudan and Uganda
- Regional steering committee (RSC) meetings: ENTRO & NELSAP-CU team participated in the second regional event with the World Bank, South Sudan, Southern Africa participating countries, SADC and AU teams in Mozambique on June 2-4, 2025.
- The First Regional RCRP Event was conducted on May 8-10, 2024, in Johannesburg, South Africa; and ENTRO SRPC, RCRP Lead and ED participated in that first event together with NELSAP-CU RC.

Beneficiaries Target Countries & Institutions

Countries

Comoros
Madagascar
Malawi
Mozambique
South Sudan

Institutions

Regional Institutions
National Institutions
Community-Level

Project Management

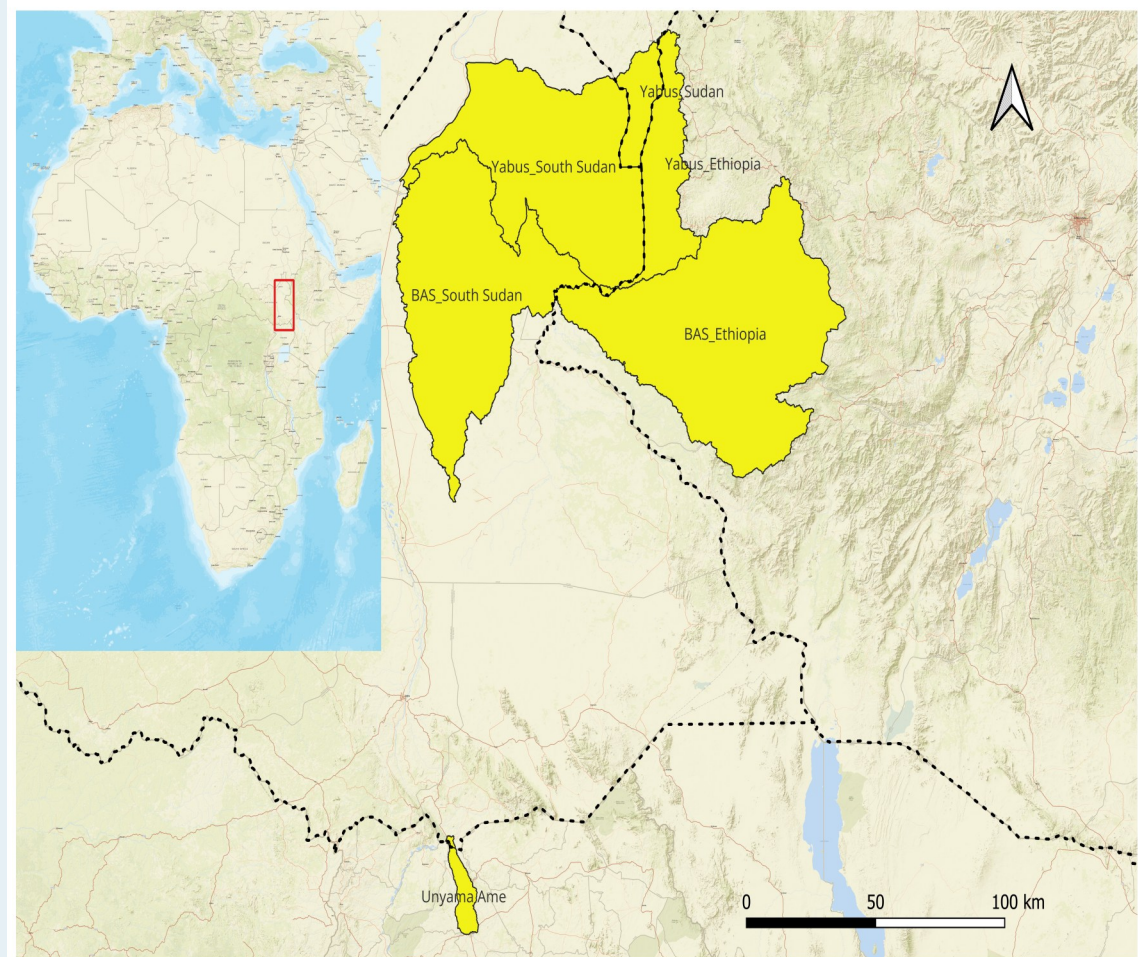
Apart from the Lead Technical Specialist stationed at ENTRO, the other regional technical staff from both ENTRO and NELSP-CU make inputs into the project programmatic processes.

Apart from ENTRO and NELSP-CU Managements supervision and coordination roles, the admin. and finance staff from both centers provide operational and management support.

Project Beneficiaries and Benefits

For which their institutions responsible for Hydromet and early warning systems, disaster risk management, and water resources management at the national and subnational levels, including line Ministries' and other government agencies'/ authorities' respective capacities will be enhanced through their:

- ⇒ participation in tailored technical training and platforms for policy dialogue/ harmonization.
- ⇒ Developing natural and built infrastructure to manage transboundary water-related climate impacts.
- ⇒ Sustainable asset management, including O&M of infrastructure at the country level.





Special Internship

Two interns from South Sudan joined the NCCR rainy season (July-September 2025) internship cohort, against the already approved ENTRO's budget.

Two additional interns from South Sudan alongside the flood season interns under the revised LOP budget will be enrolled as part and parcel of the NCCR transition sustainability plan.

The overall special internship program to be funded through South Sudan RCRP, under which 5 interns from South Sudan would be enrolled alongside 3 interns from the other three EN countries (one each) over three years, is still under discussion with the South Sudan RCRP PIU and the Bank.



ENTRO NILE BASIN INITIATIVE INITIATIVE DU BASSIN DU NIL

Participating Regional Organizations:

AU, SADC, ENTRO and NELSAP-CU for which their capacities will be enhanced through their participation in tailored technical training and platforms for policy dialogue/harmonization, including:-

- ◇ Capacity to mobilize and access a fair share of global climate funds.
- ◇ Strengthening of regional collaboration, partnerships and approaches on water-related climate impacts, emergency preparedness and response, hydromet, early warning systems and catchment conservation within transboundary basins
- ◇ Improved regional information systems in use for decision making related to droughts, flood and/or cyclones across transboundary basins.
- ◇ Building institutional capacity and centers of expertise at the re-

project sites

- ◆ *Unyama-Ame*
- ◆ *BAS*
- ◆ *Yabus*

Communities: Among which awareness, planning and capacity building for improving ‘last mile’ impacts of climate shocks (floods, droughts and/or cyclones) will be conducted, including through:

- ◆ Adaptive social protection programs to benefit the most vulnerable communities and families such as women.
- ◆ Direct benefit from improved early warning systems and preparedness capacity at local and community level.
- ◆ Land area with increased flood protection and catchment conservation.



Eastern Nile Technical Regional Office (ENTRO)

Editorials

- ◆ Eng. Isaac Liabwel
- ◆ Dr. Assefa Gudina
- ◆ Rebecca Tayachew

The Eastern Nile Technical Regional Office (ENTRO) was established by the Eastern Nile Council of Ministers (ENCOM). It was established in 2001 and started operation in June 2002 to identify, prepare, and facilitate the implementation of cooperative projects within the Eastern Nile Basin.

The three Eastern Nile countries Egypt, Ethiopia, and Sudan established the Eastern Nile Technical Regional Office (ENTRO) as an executive arm of its investment program the Eastern Nile Subsidiary Action Program (ENSAP), South Sudan joined ENTRO in 2011.

ENTRO is the executive arm of ENSAP. ENTRO is headquarter in Addis Ababa,

Vision

“A credible, adaptive regional institution fostering sustainable transboundary cooperation”.

Mission

“We Work to realize shared benefits of cooperative Water Resources Development and Management in the Eastern Nile”.



**Regional Climate Resilient Program
(RCRP)**

Eastern Nile Technical Regional Office (ENTRO)

ENTRO's Main tasks include:

- ◆ Providing support to ENSAPT, Including secretariat support.
- ◆ Liaising with Development Partners and other stakeholders.
- ◆ Identifying and prepare different projects for the EN.
- ◆ Enhancing the capacity of EN countries.

Address

Eastern Nile Technical Regional Office (ENTRO)
Lamberet Wosen Kara Road, Infront of Lamberet Bus Station
P. o. Box 27173-1000
Addis Ababa, Ethiopia
Tel.: +251 116 461130
WEBSITE <http://entro.nilebasin.org/>, ikp.nilebasin.org
E-MAIL: entro@nilebasin.org /entro@nilebasin.org

Vision

“A credible, adaptive regional institution fostering sustainable transboundary cooperation”.

Mission

“We Work to realize shared benefits of cooperative Water Resources Development and Management in the Eastern Nile”.

